

RBEP25 L50-L60/ RBEP30-35 L60-L80

Micro-tractor from 15 to 35 HP with PTO = 540 rpm Minimum weight 660-900-1100 kg.

- Shredding head working width 50, 60 and 80 cm.
- 3-point rear hitch Cat. 1 or 2.
- Horizontal reach to tractor axle 2.5m and 3m.
- Y" flail knives with shackles, width 40, thickness 5.
- Delivered with ASAE 1 3/8" cardan shaft transmission - 6 slots.
- Teleflexible controls.
- Fuel tank 65 liters, group 2 pumps: 17cc+4.5cc, group 2 flat motor: 11cc.

The advantages :

Substantial fuel savings thanks to the rotor design.

Helical rotor arrangement: *effortless, uniform drive and optimal shredding, thick rotor tube: increased rigidity and cutting inertia, electronic balancing after assembly of blades and shackles.*

Reduced energy consumption and CO2 emissions.

Hydraulic motor with two directions of rotation - high rotor speed: *rotation at 3000 rpm, i.e. a cutting speed of 55 m/s for perfect cutting and shredding.*

Rotor supports equipped with European quality bearings.

Curved chassis and rear roller: *the shape of the chassis and the special arrangement of the rear roller optimize ventilation, ejection and self-cleaning of the roller. Armored steel chassis 3 mm thick.*

Rear roller : *specially designed to resist lateral movement and protect the bearings from rolling and projections.*

High entrance opening: *allows to cut high vegetation, without laying it down.*

Reinforced front shield: *helps to withstand and absorb shocks to the shredding head.*


Shredding head: *with 186° opening and floating position for optimal working comfort and less stress on the joints.*

Safety cylinder: *allows the outer arm and the shredding head to be moved out of the way in case of collision.*

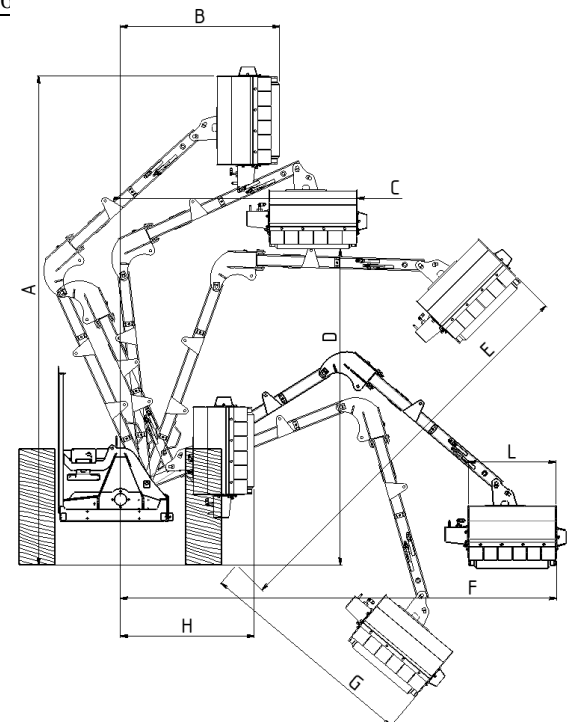
Locking bar : *locks the arms and the shredding head in the transport position by simply pinning them together.*

Bidirectional control: *allows simultaneous control of the inner and outer arm of the machine.*

Safety, ergonomics: Front shield, front/rear rubber mudguards against projections. Obstacle clearance cylinder. Accessible lubrication of all supports and joints without disassembly.

References	Working width cm	PTO speed rpm		Weight Kg	TRACTOR		
					HP	Minimum Weight Kg	Width mini outside wheels
RBEP25+RBEPLTB50	50	540*	8 x 2	315	15/30	660	1.10 m
RBEP25+RBEPLTB60	60	540*	10 x 2	320	20/30	660	1.20 m
RBEP30+RBEPLTB60	60	540*	10 x 2	330	20/30	900	1.20 m
RBEP30+RBEPLTB80	80	540*	14 x 2	345	25/35	900	1.30 m
RBEP35+RBEPLTB60	60	540*	10 x 2	350	30/40	1100	1.30 m
RBEP35+RBEPLTB80	80	540*	14 x 2	365	30/40	1100	1.30 m

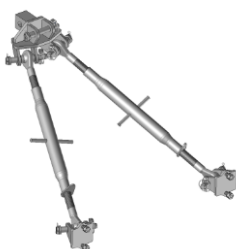
	EP25 L50	EP25 L60	EP30 L60	EP30 L80	EP35 L60	EP35 L80
A (m)	2.9	3	3.4	3.6	3.8	4.0
B (m)	1	1	1	1	1.1	1.1
C (m)	1.3	1.4	1.6	1.8	1.8	2.0
D (m)	1.8	1.8	2.2	2.2	2.6	2.6
E (m)	2.3	2.4	2.8	3	3.2	3.4
F (m)	2.5	2.6	3	3.2	3.5	3.7
G (m)	1.2	1.3	1.5	1.7	1.7	1.9
H (m)	0.9	0.9	0.9	0.9	0.9	0.9



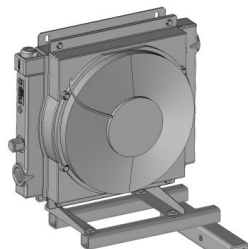
Options : Hitch stabilizer consisting of 2 adjustable push bars, a 3° point multipoint hitch and fixing shafts.

Heat exchanger consisting of heat exchanger, fixing kit and hydraulic connection.

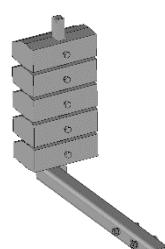
60 kg counter weight set consisting of 5 weights of 12 kg each and support.



Hitch stabilizer

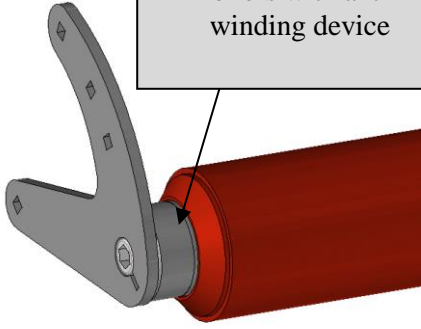


Heat exchanger

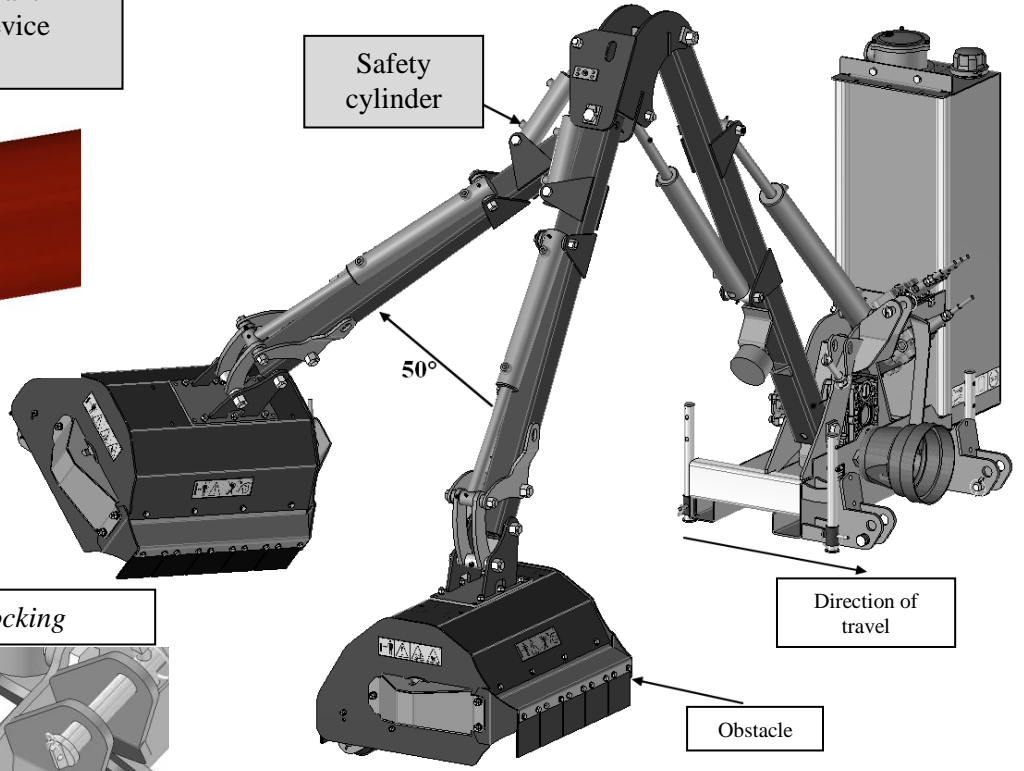


60 kg counter weight set

Rear roller: protected rollers with anti-winding device



Safety cylinder

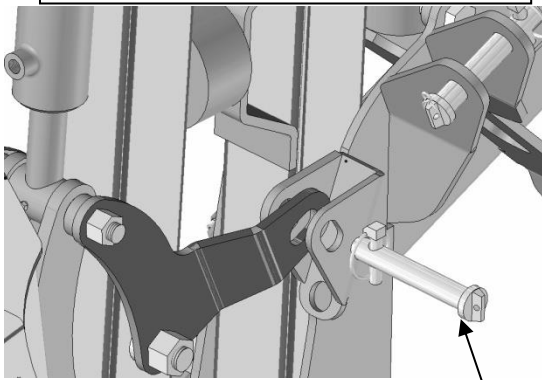


50°

Direction of travel

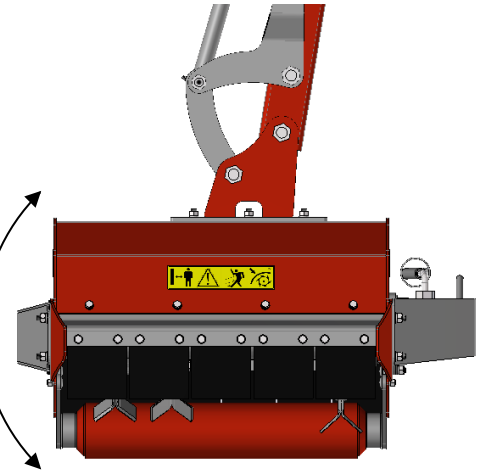
Obstacle

Transport position locking



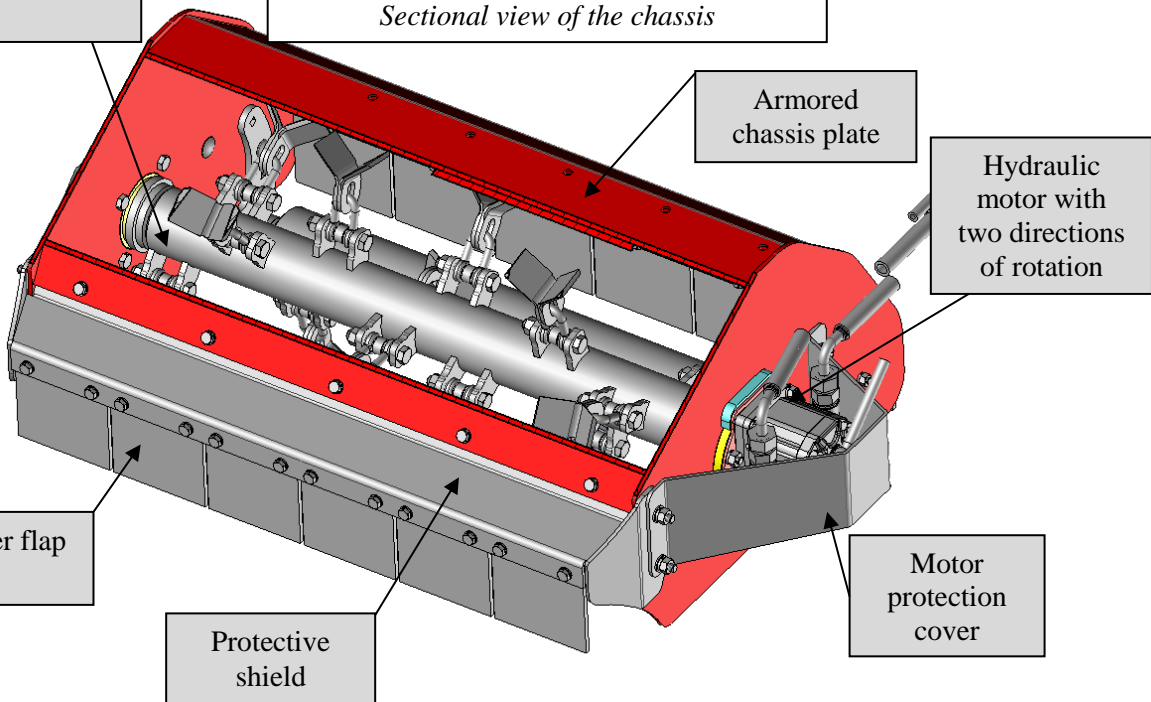
Locking bar

Cutting head, angle of rotation 186°, with Floating position



Helical rotor equipped with "Y" knives and shackles

Sectional view of the chassis



Armored chassis plate

Hydraulic motor with two directions of rotation

Rubber flap

Protective shield

Motor protection cover